

# Unlimited free thermal energy using Energy Sheet Piles

The intensive search for new sustainable energy sources is an enormous challenge for the Netherlands. After all, the entire transition to a completely sustainable energy supply must be realized by 2050!

The subsurface is already a large and readily available energy source. Ground source energy systems have already been used for many years to extract energy from the subsurface to heat buildings. However, another renewable energy source that remains virtually untapped is that of surface and ground water. One way to tap into these sources of durable energy is through activated steel sheet pile walls.

With Future Energy Technologies' (F.E.T.) patented Energy Sheet Pile, this infinitely available energy source of surface and ground water can be optimally utilized, and it is available 24/7 throughout the year.

In the Netherlands, steel sheet pile walls are used on a large scale for soil and/or water retaining structures, building pits and dike strengthening. Moreover, in the coming years, many more sheet pile walls will be installed for new construction projects and the large



scale renovation projects of the canals and quay walls in the city centers. In Amsterdam alone approximately 200 km of quay wall is in dire need of renovation. By outfitting these steel sheet pile as Energy Sheet piles these structures can attain an additional secondary function as an infinite source of energy.

Energy Sheet Piles allows homes and buildings to be easily heated and cooled using this renewable energy source. The steel sheet pile walls are fitted with collectors and

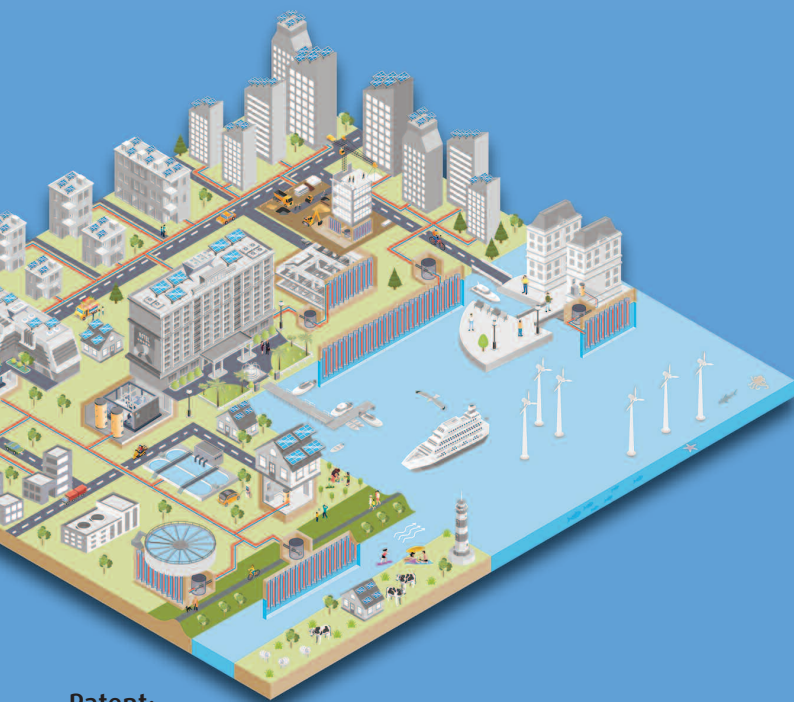
then installed in the ground without interfering with the method of installation. A heat transfer fluid flows through the collectors to extract the sustainable energy from the surface water and subsurface. By means of heat pumps, buildings can then be heated and cooled throughout the year. This free energy source is infinitely available and is literally at your doorstep, and when the electrical energy needed for the heat pump is supplied by sustainable sources (i.e. solar panels or wind energy), the entire system becomes energy- and carbon-neutral.

**Do you want to make a vital contribution to the energy transition, reduce CO<sub>2</sub> emissions, have fossil free heating, cooling and benefit from free energy?  
Then our Energy Sheet Pile is the solution for you!**

# The benefits at a glance:

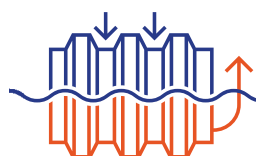
- environmentally friendly source, significant contribution to CO2 reduction
- low installation costs
- can be easily integrated in regular work flow of construction
- closed system: no liquids into or extracted from the soil
- silent
- energy source available 24/7 year round
- very high efficiencies (COP between 5-6)
- suitable as a heat and cooling source
- steel components 100% recyclable

For more information please see  
[www.energie-damwanden.nl](http://www.energie-damwanden.nl)



Patent:

The Energy Sheet Piling is patented by FET under EP 2 374 942 B1 and EP 3 486 378 B1. Gooimeer is licensee of Energy Sheet Piling for the Benelux.



Energiedamwand  
Nederland®

Energiedamwand Nederland BV

Damsluisweg 67

1332 EB ALMERE

[www.energie-damwanden.nl](http://www.energie-damwanden.nl)

[mail@energie-damwanden.nl](mailto:mail@energie-damwanden.nl)

+31-36-5370333

To the site

